



Protect



Collaborate



Educate

○ Issue 1 | ○ Volume 1 | ○ May 2014



322 Laurel St. Ste. 11  
Brainerd, MN 56401  
P: 218.824.1189

timt@mississippiheadwaters.org  
www.mississippiheadwaters.org

# River *focus*

ENVOKING THE AWARENESS OF THE UPPER MISSISSIPPI RIVER THROUGH THE MISSISSIPPI HEADWATERS BOARD

## Sub Watershed Prioritization Meeting a Success with County Commissioners

On April 2, 2014 the Mississippi Headwaters Board (MHB) held a meeting with eight local county boards and resource professionals to discuss the sharing of a new corridor sub-watershed prioritization tool; and to bring county commissioners and professionals together as one.

A Clean Water Legacy grant from the Board of Water & Soil Resources was provided to the MHB to develop this tool to assist other agencies in grant attainment and implementation strategies. “The tool focuses on risk to watersheds,” says Executive Director Tim Terrill, “to provide solid data for local resource professionals to base decisions off quantita-

tive facts, and fulfill the mission of the MHB.”

Other presentations were given about practical application of the water quality analysis provided by Emmons and Olivier Resources Inc. Also an urban storm water planning session was provided by HDR Engineering to help MS4 storm water cities meet EPA standards.

Based off a survey, over 70% thought it was a high quality meeting and fulfilled their expectations, and 92% would recommend it to others.

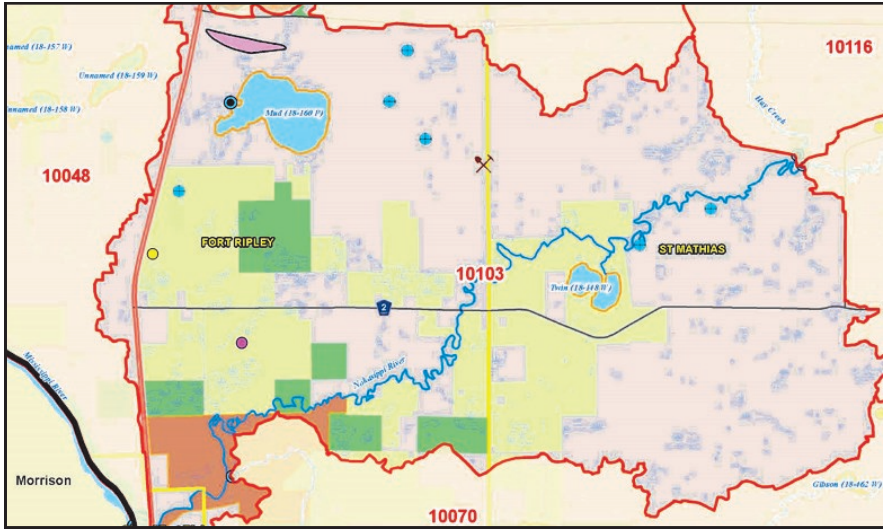
Dept. of Natural Resources Commissioner, Tom Landwehr, presented at the meeting and challenged the MHB to “identify and implement



DNR Commissioner  
Tom Landwehr

boldly” to protect the infrastructure of the natural resources in the area. The Departments general message was that a consistent and unified effort continue for the good of the area. Everyone benefits from conservation, and the MHB is working hard to protect water quality in a systematic way.

# Moving the needle toward protection!



Lower Nokasippi Minor Watershed

## Risk Classification (by catchment)

- Vigilance
- Protection
- Enhance / Protection
- Enhance



**Before Easements**



% Public Land	4
% Easements	0
% Lakes	2
% Streams	0
% Wetlands (private)	7
<b>% Protected</b>	<b>13</b>
<b>Assigned Risk Level</b>	<b>Enhance</b>



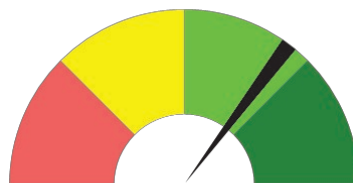
**After Easements**



% Public Land	4
% Easements	24
% Lakes	2
% Streams	0
% Wetlands (private)	7
<b>% Protected</b>	<b>37</b>
<b>Assigned Risk Level</b>	<b>Enhance / Protection</b>



**GOAL**



% Public Land	4
% Easements	32
% Lakes	2
% Streams	0
% Wetlands (private)	7
<b>% Protected</b>	<b>45</b>
<b>Assigned Risk Level</b>	<b>Protection</b>

Detailed maps may be viewed at [www.mississippiheadwaters.org/AdditionalResources.asp](http://www.mississippiheadwaters.org/AdditionalResources.asp)